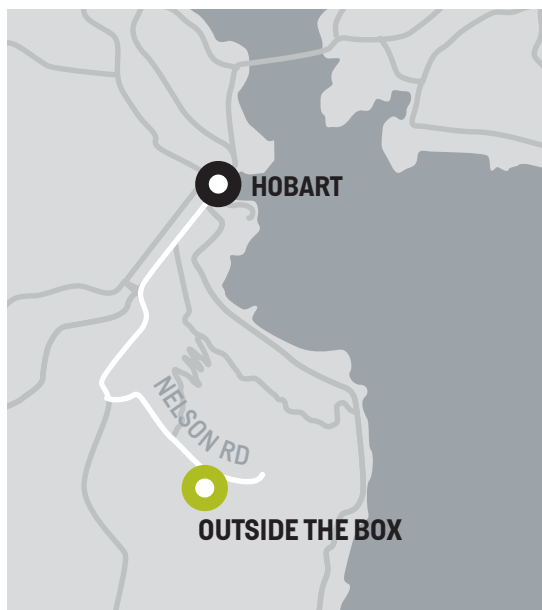




ACCOMMODATION



- Sunny and surrounded by bush on Mt Nelson with great views of kunanyi / Mount Wellington and down the coast to Kingston
- 10 minutes from the centre of Hobart and the University of Tasmania
- 2 minutes walk to public transport into town via the University
- Use of tennis court in spectacular setting
- Off-street parking

This architect-designed and meticulously renovated property sits on 3.5 acres of bushland and extensive garden beds maintained by the owners.

The property is on two levels and includes exclusive use of a balcony, small lawn area and native-plant rockery along with access to the surrounding bushland and tennis court.



ACCOMMODATION



FEATURING:

- Open plan living and dining
- Fully equipped kitchen
- 1 x queen bedroom
- 1 x double sofa bed available in living space if required
- Study nook with desk
- Full bathroom
- Laundry facilities
- Free WiFi
- Netflix streaming service

RENTAL RATES:

- Minimum stay 2 nights
- Weekly and Monthly rates available on application.

BOOKINGS:

- hostinghobart.com.au
- Luxury Bushland Retreat - Outside the Box
airbnb.com.au/rooms/36491309

PLEASE NOTE:

- No smoking or pets on the property
- All profits used to support Earth, Arts, Rights projects

CONTACT:

hello@outsidethebox.org.au



ACCOMMODATION



CONTACT:

hello@outsidethebox.org.au

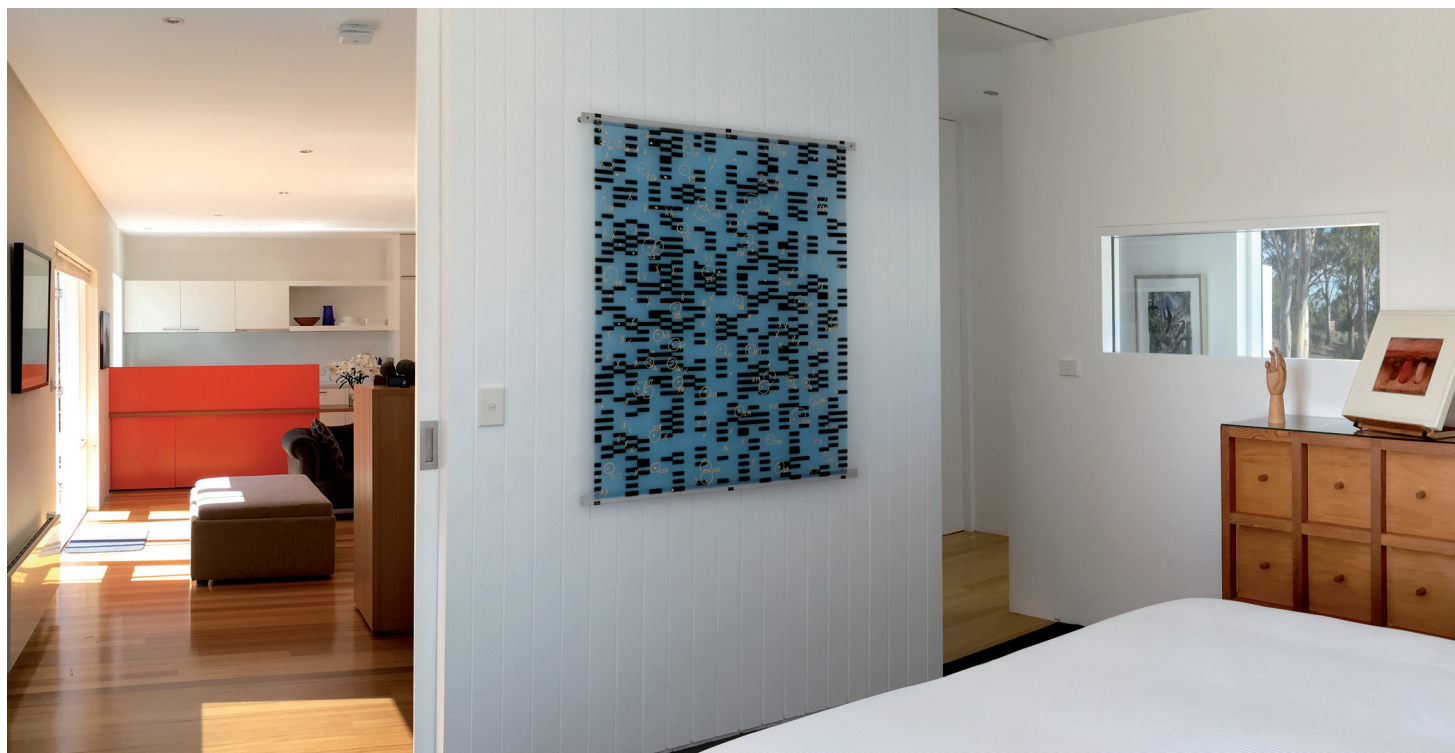


ACCOMMODATION





ACCOMMODATION



CONTACT:

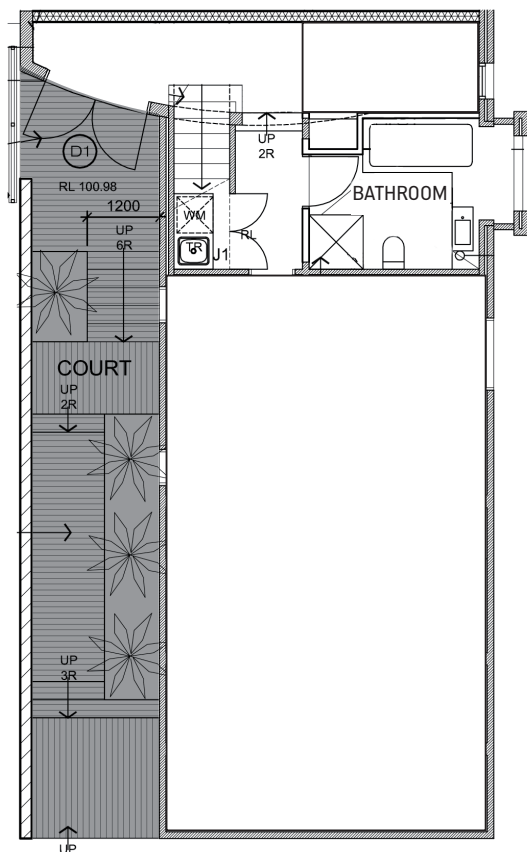
hello@outsidethebox.org.au



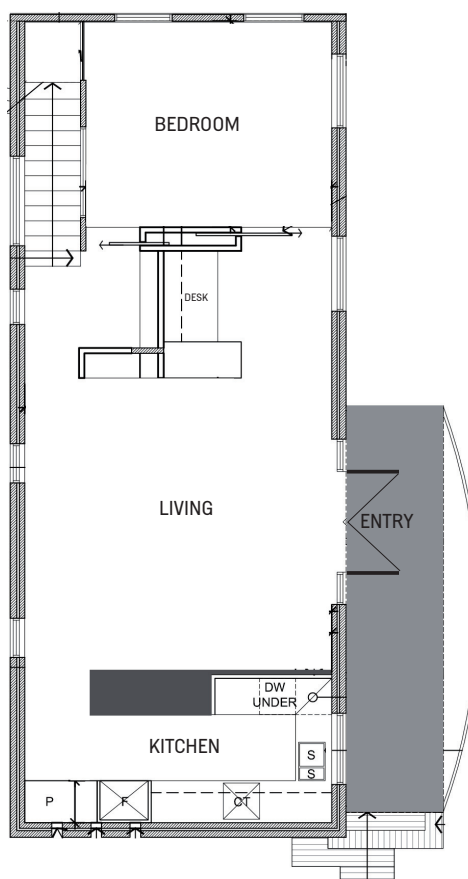
ACCOMMODATION



GROUND FLOOR



FIRST FLOOR



CONTACT:

hello@outsidethebox.org.au